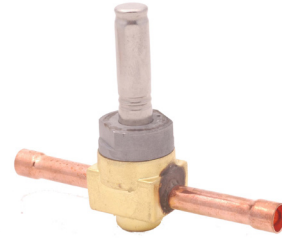


The 500RB is a pilot-operated, 2-way, normally open valve. 500RB valves are used for liquid, suction or discharge gas refrigerant service.



### Features

- One coil fits all valve sizes
- Extended ends for easy installation
- Can be positioned in remote locations
- Long-life molded coils
- Low pressure differential required for full opening
- PTFE O-ring for superior external sealing

### Options

- Connection types: SAE, ODF, NPTF and ODF inlet with ODM outlet

### Specifications

- Maximum fluid temperature: 250°F
- Maximum working pressure: 500 psig
- MOPD: 275 psig
- UL/CUL file number: MP604

*NOTE: Mounting enclosing tube more than 90° off vertical up position is not recommended.*

**NOTE: This valve requires a DM, MM or ASC2-Type coil assembly. ASC2-Type Coil requires cable assembly (PCN:059261).**

**Nomenclature** example: 500RB 4T3 VLC

500R	B	4	T	3	VLC
Valve Series	Design Series	Port Size (in 1/16")	Connection Type F = SAE T = ODF (copper entended fittings) P = NPTF S = ODF inlet/ODM outlet	Connection Size (in 1/8")	Coil*

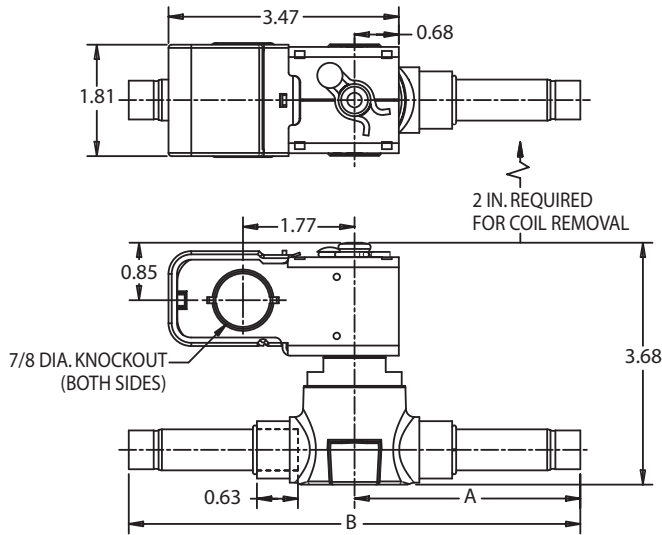
\* NOTE: Valves are shipped without the solenoid coils (VLC = Valve Less Coil). See coil assemblies for availability.

Ordering Information and Nominal* Liquid Capacity Table – Tons (kW)								
PCN	Description	Connection Size	R-12	R-134a	R-22	R-407C	R-404A/R-507	R-502
063274	500RB 2 F 2	1/4 SAE	2.4 (8.7)	2.9 (10.4)	3.1 (11.0)	2.9 (10.3)	2.1 (7.4)	2.0 (7.1)
063276	500RB 2 F 3	3/8 SAE						
063278	500RB 2 T 2	1/4 ODF						
063280	500RB 2 T 3	3/8 ODF	3.7 (13.0)	4.4 (15.6)	4.8 (17.0)	4.5 (16.0)	3.2 (11.3)	3.1 (11.0)
063282	500RB 3 F 2	1/4 SAE						
063284	500RB 3 F 3	3/8 SAE						
063286	500RB 3 F 4	1/2 SAE						
063288	500RB 3 T 2	1/4 ODF						
063290	500RB 3 T 3	3/8 ODF						
063292	500RB 3 T 4	1/2 ODF	4.4 (15.6)	5.3 (18.6)	5.6 (19.8)	5.3 (18.8)	3.7 (13.1)	3.6 (12.7)
063294	500RB 4 F 3	3/8 SAE						
063296	500RB 4 P 2	1/4 NPTF						
063298	500RB 4 P 3	3/8 NPTF						
063300	500RB 4 S 3	3/8 ODF x 1/2 ODM						
063302	500RB 4 S 4	1/2 ODF x 5/8 ODM						
063304	500RB 4 T 2	1/4 ODF						
063306	500RB 4 T 3	3/8 ODF						
063308	500RB 4 T 4	1/2 ODF						
063310	500RB 4 T 5	5/8 ODF						
063312	500RB 5 F 4	1/2 SAE	6.5 (23.0)	7.8 (27.7)	8.2 (29.0)	7.8 (27.6)	5.4 (19.1)	5.3 (18.8)
063314	500RB 5 F 5	5/8 SAE						
063316	500RB 5 P 3	3/8 NPTF						
063318	500RB 5 S 4	1/2 ODF x 5/8 ODM						
063320	500RB 5 S 5	5/8 ODF						
063322	500RB 5 T 3	3/8 ODF						
063323	500RB 5 T 4	1/2 ODF						
063325	500RB 5 T 5	5/8 ODF	7.8 (27.7)	9.4 (33.4)	10.0 (35.4)	9.5 (33.6)	6.5 (23.0)	6.5 (23.0)
063327	500RB 6 F 4	1/2 SAE						
063329	500RB 6 F 5	5/8 SAE						
063331	500RB 6 P 3	3/8 NPTF						
063333	500RB 6 S 4	1/2 ODF x 5/8 ODM						
063335	500RB 6 S 5	5/8 ODF						
063337	500RB 6 T 3	3/8 ODF						
063339	500RB 6 T 4	1/2 ODF						
063341	500RB 6 T 5	5/8 ODF	12.2 (43.4)	14.8 (52.5)	15.6 (55.2)	14.8 (52.4)	10.3 (36.5)	10.1 (35.8)
064038	500RB 7 S 5	5/8 ODF x 7/8 ODM						
064064	500RB 7 T 4	1/2 ODF						
064065	500RB 7 T 5	5/8 ODF						

Capacities based on 100°F liquid and 40°F saturated evaporator per ARI standard 760-87.

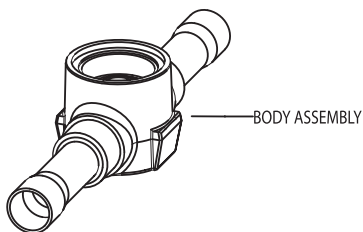
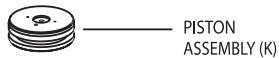
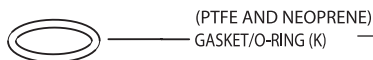
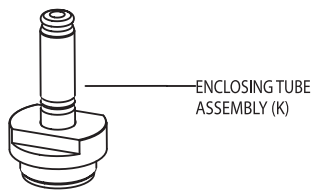
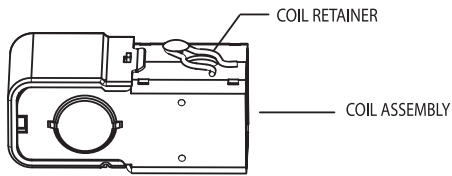
\*See Extended Capacity Tables for ratings at a wide range of conditions.

## Dimensional Data (in)



\*NOTE: Drawing indicates extended copper tube version.

## Exploded View & Parts Kit Data



## Without Extended Ends

Valve	Port Size	Conn. Size & Style	A	B	
500RB 4P2	1/4	1/4 NPTF	-	2.37	
500RB 4P3		3/8 NPTF		2.37	
500RB 4S3		3/8 ODF X 1/2 ODM		0.50	2.37
500RB 4S4		1/2 ODF X 5/8 ODM		0.56	2.37
500RB 4F3	5/16	3/8 SAE (male flare)	-	3.12	
500RB 5P3		3/8 NPTF		2.37	
500RB 5S4		1/2 ODF X 5/8 ODM		0.56	2.37
500RB 5S5		5/8 ODF		2.37	
500RB 5F4	3/8	1/2 SAE (male flare)	-	3.50	
500RB 5F5		5/8 SAE (male flare)		3.75	
500RB 6P3		3/8 NPTF		2.37	
500RB 6S4		1/2 ODF X 5/8 ODM		0.56	2.37
500RB 6S5	7/16	5/8 ODF	-	2.37	
500RB 6F4		1/2 SAE (male flare)		3.50	
500RB 6F5		5/8 SAE (male flare)		3.75	
500RB 7S5		5/8 ODF X 7/8 ODM		0.63	2.98

## With Extended Ends

Valve	Port Size	Conn. Size & Style	A	B
500RB 2T2	1/8	1/4 ODF	2.42	4.67
500RB 2T3		3/8 ODF		
500RB 3T2	3/16	1/4 ODF	2.50	5.00
500RB 3T3		3/8 ODF		
500RB 3T4		1/2 ODF		
500RB 4T4	1/4	1/2 ODF	3.25	6.50
500RB 4T5		5/8 ODF		
500RB 5T3	5/16	3/8 ODF	2.31	4.63
500RB 5T4		1/2 ODF		
500RB 5T5		5/8 ODF		
500RB 6T3	3/8	3/8 ODF	2.50	5.00
500RB 6T4		1/2 ODF		
500RB 6T5		5/8 ODF		
500RB 7T5	7/16	5/8 ODF X 5/8 ODF	-	6.88

## Valve Kits

Valve	Complete Kit	PCN
500RB 2-6	KS-30353	064268
500RB 7	KS-30355	064264

Replace with same gasket color and material; discard other

### Gasket Kit

Gasket Kit **KG10025 - PCN 049190**  
(contains 12 pieces - each of PTFE and Neoprene O-rings).

### Coil Assembly

DM, MM or ASC-Type style only

Use MagMax style coil for operation on DC voltage.  
No other DC coil may be used.